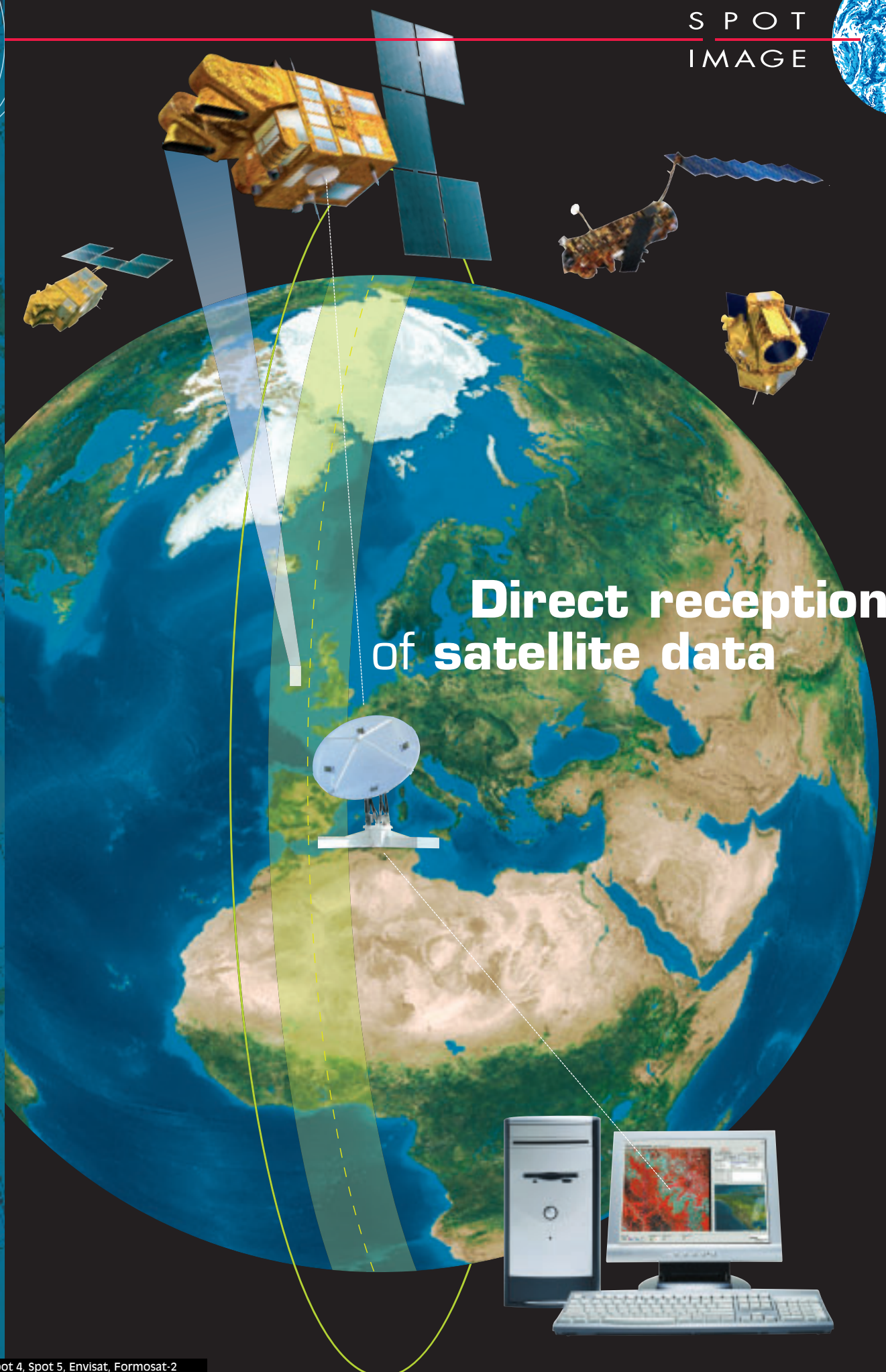
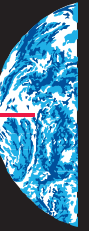


REAL-TIME GEOGRAPHIC INFORMATION

SPOT
IMAGE



Direct reception of satellite data

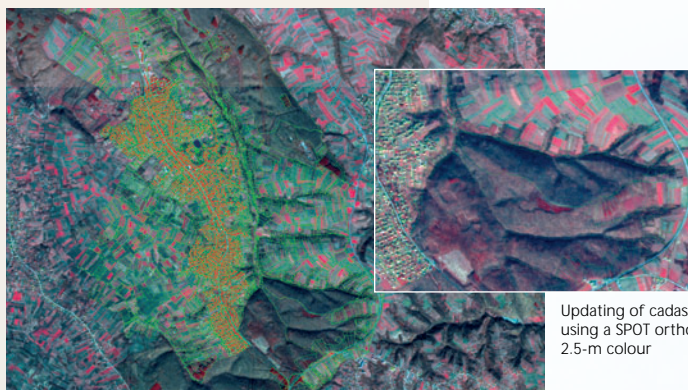
CARTOGRAPHY, CADASTRAL MAPPING & LAND PLANNING

You need

- To build topographical reference databases
- To prepare and carry out urban and rural development programmes
- To create and update cadastral databases
- To optimize road and rail networks
- To organize regular censuses

You will

- Make topographical maps to international standards at 1:25 000
- Classify different urban structures
- Update cadastral information from 1:50 000 to 1:10 000
- Simulate layouts for roads and railway tracks and make choices accordingly
- Define zones before undertaking a census



Updating of cadastral map using a SPOT orthoimage 2.5-m colour



From a FORMOSAT-2 image to a detailed interpretation report

DEFENCE & SECURITY

You need

- To increase the number of information sources to reinforce surveillance of territories
- To detect and inspect changes in sensitive zones
- To organize peace-keeping operations

You will

- Map large territories from a distance
- Monitor frontiers and coastlines on a daily basis
- Detect and identify infrastructures accurately
- Make geographic databases to prepare for surveillance missions

The benefits of direct

- A range of optical and radar satellites to choose from
- A telemetry contract tailored to your needs
- Real time acquisition of relevant information
- A guaranteed level of confidentiality
- Production of as many images as necessary



Radiometric classification of fields from a SPOT 10-m colour

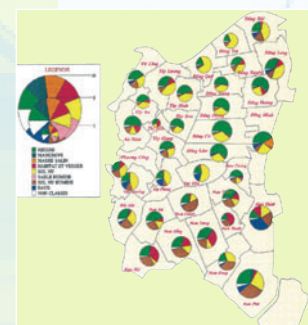
AGRICULTURE & FORESTRY

You need

- To evaluate agricultural lands and crops early
- To anticipate risks and evaluate their impacts (i.e. pollution, drought, floods)
- To enforce the application of agricultural regulations and environment protection
- To acquire knowledge of forest areas and monitor forest stands

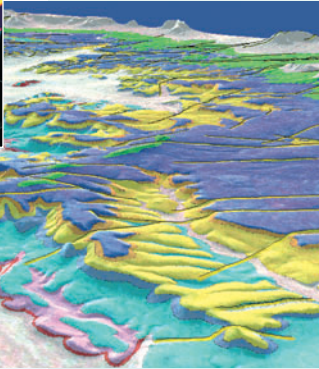
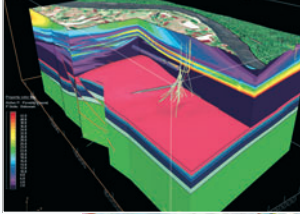
You will

- Generate accurate and reliable agricultural statistics before harvesting
- Manage large cultivated areas from a distance
- Set up an early warning system when changes are detected
- Make an inventory of forests and manage them (tree stands, cuts, fire prevention)



Agricultural statistics © Geosys

NATURAL, NON-RENEWABLE RESOURCES



Geological mapping with a SPOT DEM

You need

- To thoroughly explore geological and hydrological resources
- To optimize the installation of new mining or oil infrastructures
- To evaluate the impact of operations on the environment
- To make a national inventory of water resources

You will

- Locate potential sites which can be exploited
- Map the impact of natural hazards on industrial activities
- Map ground deformations due to mining operations
- Make maps of potential surface water or groundwater resources

multisource reception

- Reduced acquisition costs for space data
- A long-term return on investment through service continuity
- Building of your own locally stored archive
- Development of applications right next to the antenna

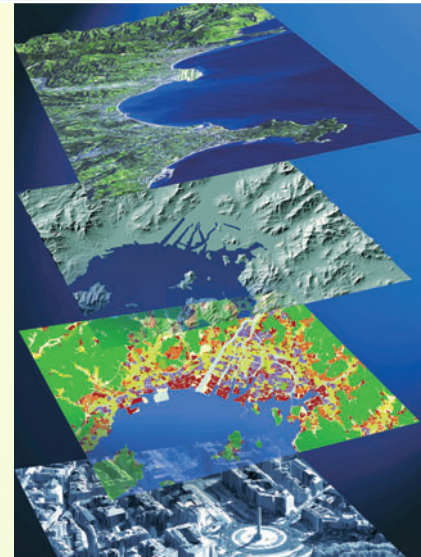
TELECOMMUNICATIONS

You need

- To map receiving zones and identify difficult zones
- To maintain and develop infrastructures for existing telecommunications systems
- To optimize the positions of relays to increase network coverage

You will

- Precisely classify different types of land use
- Make a 3D database for interactive simulation before installing new infrastructures



Examples of databases (Istar)

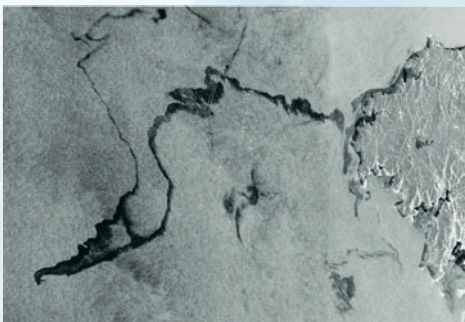
SUSTAINABLE DEVELOPMENT & RISK MANAGEMENT

You need

- To preserve the environment around industrial projects
- To draw up plans for dealing with natural hazards or industrial accidents
- To define and monitor natural protection zones
- To control the development of tourism

You will

- Regularly monitor risk sites (industries, offshore infrastructures)
- Update maps of vulnerable zones and the shoreline
- Make accurate maps for tourism which are easy to update



Detection of marine pollution with Envisat

Direct receiving facilities for multisource data

Antennas

The 3.4-m diameter model is used to receive imagery from SPOT satellites and, with a more limited visibility circle, from ENVISAT and FORMOSAT-2. The 4.5-m or 5.4-m models are able to enlarge the visibility circle for imagery from ENVISAT and FORMOSAT-2 and will be able to receive data from forthcoming satellites KOMPSAT-2, TERRASAR-X, THEOS and PLEIADES.

Terminals

Terminals are used to acquire, inventory, archive, process and produce data transmitted by digital sensors aboard satellites. To ensure maximum production flexibility and capacity, each of the satellites in the Spot Image range has a dedicated terminal. Currently, the range includes SPOT 4 and 5, ENVISAT and FORMOSAT-2. The man-machine interface for the SPOT terminal is also used for the FORMOSAT-2 terminal.

Option: **ANDORRE**, a digital workshop for automatic orthorectification of SPOT images which can rapidly produce large volumes of highly accurate products.



Customized receiving contracts

■ SPOT

Free access to SPOT 4 and 5 in the receiving zone within a radius of 2,500 km around the station or programming rights to order. Requests for programming and monitoring of on-line acquisitions

■ ENVISAT

There are 3 possible levels of programming rights for the receiving area within a radius of 2,000 km around the station

■ FORMOSAT-2

In the receiving area within a radius of 1,900 km around the station; programming rights are expressed in acquisition minutes per day

Distribution licences for data from these satellites cover the national territory.

Services included

■ **System:** installation, formal acceptance testing, on-site training, hot line and maintenance of hardware and software

■ **Operations:** interface with Spot Image teams for daily programming and support for station operations

■ **Applications:** support for installation of information centres right next to the antenna for defence purposes, agriculture, cartography, ocean surveillance, including transfer of technology or know-how, training and technical support

An active partnership

Subscribers to the Spot Image network of receiving stations are treated as full partners and thus benefit from the experience acquired by each of the network members when developing their own activities.

They have already chosen Spot Image direct receiving stations:

South Africa (CSIR), Saudi Arabia (KACST), Australia (Raytheon), Canada (Iunctus), China (RSGS), Korea (ADD), Spain (ESA), United States (CSTARS and EV), France (CLS), Israël (ISA), Japan (ImageOne and NIPR), Malaysia (MACRES), Mexico (ASERCA), Pakistan (SUPARCO), Singapore (CRISP), Taiwan (CSRSR), Thailand (GISTDA), Turkey (ITU)

For further information:
sales@spotimage.com

www.spotimage.com

France, Australia, Brazil, China,
United Arab Emirates, United States, Japan, Mexico, Singapore

